

- Pressure ranges: 0 to 690 bar (standard version)
- Pressure ranges: 0 to 3000 bar (customized version)
- Control range: 10% - 100% FS
- Medium: Water
- Stability: >0,1% FS
- Achieves required pressure value in >3 seconds
- Pressure generation
- Prime function
- Rs232 / USB Interface
- Special configurations are available at customer request



Hydraulic Pressure-Controller

The LC4-H series has been specially developed for service in a robust environment. The modular format makes this unit suitable for inclusion into almost any customized system. The use of advanced, modern materials, combined with ease of operation, makes the LC4 particularly suitable for the harsher industrial and production environment. The key operational features are its ability to quickly and easily calibrate gauges and pressure sensors at the touch of a button and without complicated software menus or system set up.

Features:

- **Manual Operation:** Fine tuning of the required set-point value possible through the control wheel.
- Button operation for rapid pressure build in 10% and 25% steps ("other incremental pressure "steps" available as an option).
- **PC Control:** Through the RS232 a 'P' control instruction may be given for building and maintaining pressure. The actual pressure is permanently displayed. A simple and flexible software is available to provide real time management and recording of data.

The unit is designed especially for the calibration of pressure sensors and gauges in large quantities. The easy, manual operation and the extreme speed at which it reaches the required pressure value reduces the time of calibration to just a few seconds. The system can generate a hydraulic pressure in seconds.

Operation is through the unit's tuning wheel (with fine/coarse facility) and the buttons on the front control panel, which can be set in increments of 10% or 25%.

The 100% value button, as with other % step buttons, can be fine-tuned in the calibration process with the help of control wheel.

Up to three independent pressure ranges can be integrated in the unit. Each can be completely different. Selection of the desired range is through the external control panel or the optional RS232 port.

LCD Display

A LCD display module with internal pressure reference is available. The display accuracy is 0.05% + accuracy of the reference sensor. The unit constantly displays the active pressure range selected.

Interface Rs232

An integrated RS232 port allows for the input of selected pressure and the permanent display of the pressure value.

Pressure Generation:

The hydro pneumatic module generates, controls and transmits pressure to the instruments under test. Generation of pressure involves the use of an actuator controlled by electro-pneumatic valves. Sensors measure continuously the value of the pressure in the system so as to be able to adapt actions according to the parameters set by the users.

The various pressure connections are found on the back of the Lc4, including a connection intended for receiving the supply of compressed air necessary for the operation of the electro-pneumatic valves. The fluid tank is outside of the case and can be filled during operation.

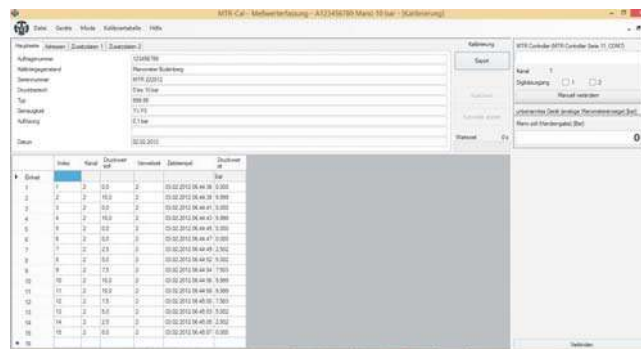
Technical Specifications

Standard Equipment	<ul style="list-style-type: none"> - Tower Case 19" incl. external control panel and LCD Display - Channel Selection (max. 3 channels) - Tuning Wheel (fine/coarse facility) - % Buttons, Tara Button - LCD Display - One Pressure Output per Channel - Rs232 or USB Interface - 1 Pressure Module - 1 Pressure Reference Sensor - External Tank
	Pressure Ranges
	0,7 to 100 bar
	1 to 200 bar
	3,5 to 400 bar
	15 to 650 bar
	Intensifier: 20 to 1000 bar, Volume 8,8 qcm
	Intensifier: 40 to 1450 bar, Volume 6,6 qcm
	Intensifier: 80 to 2900 bar, Volume 6,6 qcm
Accuracy (Pressure Control)	0,3% FS; >= 400<650 bar 0,5% FS, >650 bar 1% FS
Control Range	10% to 100% FS
Pressure Channels	3
Control Stability	<650 bar 0,2% FS, >650 bar > 0,5%
Accuracy	< 650 bar 0,05% FS; >650 bar >0,3% FS
Interface	Rs232 or USB
Medium	Water
Operation Temperature	15°C to max. 35°C
Pressure Supply	10 bar Air Pressure
Power Supply	230V~
External Reservoir	1 Liter or 2 Liter
Extras	Test Bench. Customized Solutions

Lc4 HD Test Bench 5000 bar/7000 bar (Joystick Version)



MTR Calibration Software



Budenberg VAC Ltd.
4 Gilchrist Road
Northbank Industrial Park
Irlam
Manchester
M44 5AY

Budenberg
Middle East Trading LLC
PO Box 18980,
Al Nahda Road, Dubai,
United Arab Emirates

Budenberg Gauge Pte. Ltd
18 Sin Ming Lane
#07-12
Midview City
Singapore 573960

Budenberg Gauge Pvt Ltd
299-300 2nd Main Road,
Nehru Nagar,
Old Mahabalipuram Road,
Chennai 600 096,
Tamil Nadu,
India